

Azimut 70

PARSIFAL
YACHTING





Specifications

Builder: Azimut

Model: 70

Year: 1991

Class: Flybridge

L.O.A.: 21.50m

Beam: 5.8m

Hull Material: Fibreglass

Cruising Speed: 18 knots

Max Speed: 22 knots

Fuel Capacity: 4300L

Water Capacity: 1000 L

Holding Tank: 700L

Engines: 2 x MTU 1000hp (Diesel)

Accommodation: 10 guests in 4 cabins
plus 2 crew

Asking Price: € 280.000 Vat Paid



Machinery

Engines: 2 x MTU

Power : 1000hp each

Fuel Type; Diesel

Engine Type: Inboard

Engine Hours: 1024hrs (Feb 2023)

Electrical Equipment

Shore Power Inlet

Generator

Inverter

Electronics

Radar

Plotter

DVD Player

Autopilot

Radio

Compass

CD Player

GPS

Cockpit Speakers

VHF



Accommodation

She can accommodate up to 10 guests in 4 cabins, all with en-suite facilities.

1 Master Cabin

1 VIP Cabin

2 Twin Cabins with triple beds

Plus 2 crew members in 1 crew cabin

Inside Equipment

Dishwasher

Bow Thruster

Washing Machine

Oven

Manual Bilge Pump

Microwave Oven

Air Conditioning

Heating

Hot Water

Refrigerator

Fresh Water Maker

Sea Water Pump

Battery Charger



Outside Equipment

Gangway
Hydraulic Gangway
Tender
Liferaft
Cockpit Table
Swimming Ladder

Description

A fine example of Azimut 70 Fly Built in 1991 but continuously upgraded throughout the Years.

A well known model for her interior and exterior volumes. she can comfortably accommodate up to 10 guests in four cabins plus crew.

Disclaimer

The Company offers the details of this vessel in good faith but cannot guarantee or warrant the accuracy of this information nor warrant the condition of the vessel. A buyer should instruct his agents, or his surveyors, to investigate such details as the buyer desires validated. This vessel is offered subject to prior sale, price change, or withdrawal without notice.

salon







kitchen



master cabin



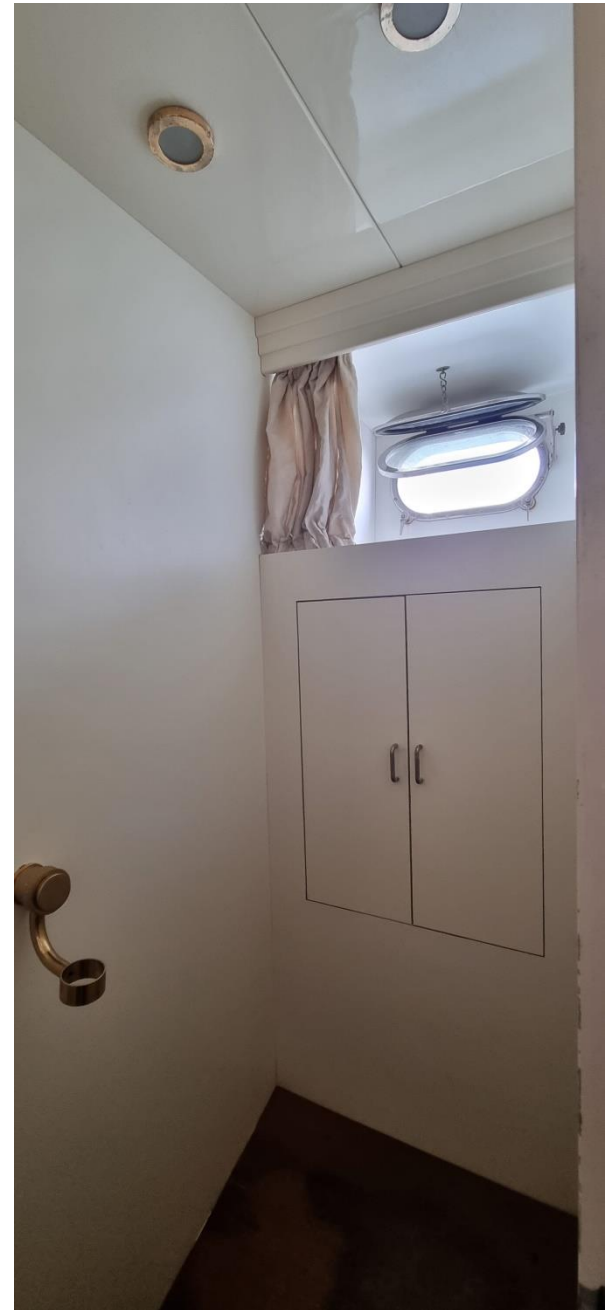
master cabin ensuite

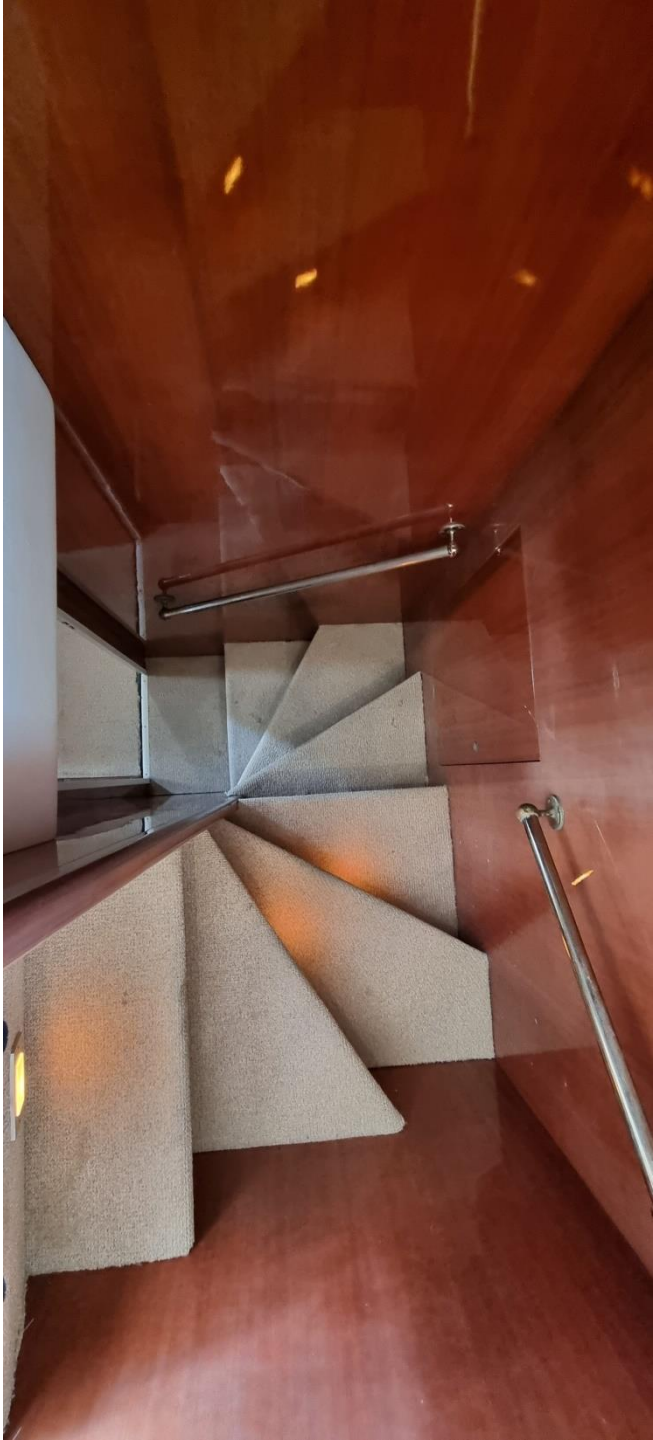


Vip cabin



Vip cabin ensuite





twin cabin 1



twin cabin 2





sundeck



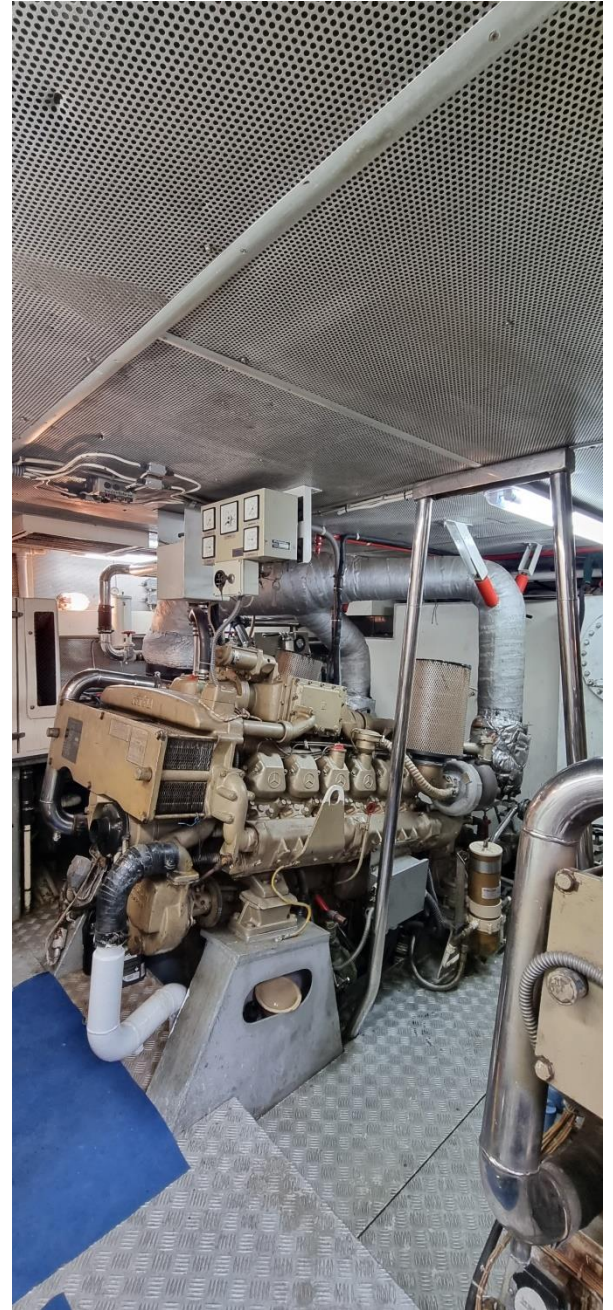
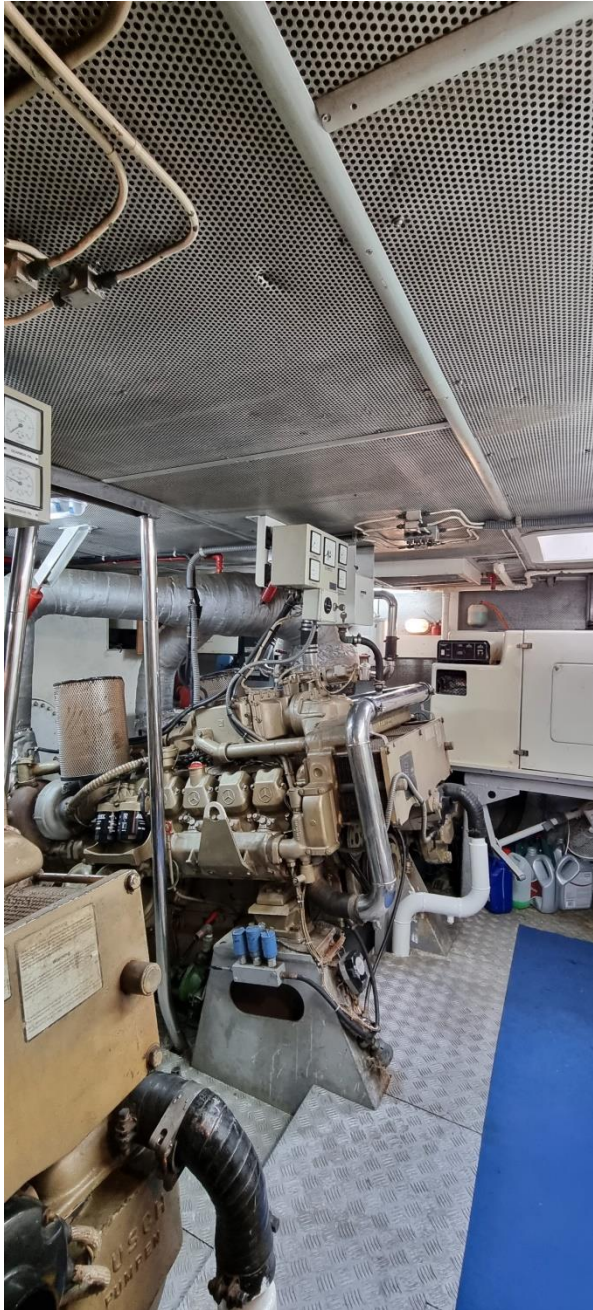
sundeck



bowdeck



engine



engine

