

**PARSIFAL**  
YACHTING

Baia 100 / 2008

---



## Specifications

Builder: Baia

Model: 100

Year: 2008

Refit: 2020 - 2022

L.O.A.: 31m (101.71ft)

Beam: 7.3m (23.95)

Draft: 3m (9.84 ft)

Hull Material: Fibreglass

Hull Shape: Planning

Cruising Speed: 30 knots

Max Speed: 35 knots

Range: 250nm

Fuel Capacity: 8,000L

Water Tank Capacity: 1,200 L

Holding Tank: 270 L

Engines: 2 x 2400hp MTU (1,790kW each)

Accommodation: 10 guests in 4 cabins

Flag: UK

Asking Price: € 3.100.000



## Machinery

Engines: 2 x 2400hp MTU (1,790kW each)

Engine Type: Inboard

Engine Model: 16V2000 M94

Engine Hours: 1000h (Sept 2022)

Fuel Type: Diesel

Drive Type: Surface Drive

ZF 3000 series

Propulsion: Arneson ASD16

## Generators / Electrical Equipment

Generators: 2 X 27 Kw Kohler

Batteries: 22 x (10 x Service, 8 x Engine, 2 x Generator, 2 x Spare Navigation)

Inverter: 2 x 24 /2500 Mastervolt

Shore Power: 380 V/641- Including cable master system



## Accommodation

Accommodates 10 guests in 4 cabins plus 3 crew

One Master Cabin with en-suite facilities

One Vip Cabin with en-suite facilities

Two Guest Cabins with single bed and one pullman, both with en-suite facilities

Two Crew Single Cabins with en-suite facilities

Galley One Bed (Galley area)

## Audio / Visual Equipment

Apple TV

SonyKD- 49XE7005 (Salon)

Nova(Salon)

Ipad: Ipad controller entertainment system

DVD Bose lifestyle (DualZone)

TVs

1 x 42" Sharp (Master Cabin)

1 x 32" Sharp (VIP Cabin)

1 x 26" Sharp (Galley)

2 x 20" Sharp (Guest Cabins)



## Safety Equipment

Safes: 3 X Safe (2 x master Cabin, 1x VIP Cabin)

Fire Fighting Fire Detection System/kent Electronics

Fire Extinguishers 12 X Fire Extinguishers Cylinder (Engine Room 89 Kg, Novec) (10 x dry Power, 2 x co2)

Life Raft 2 X life Rafts (1x10 person, 1x12 Person)

Life Rings 13 X life Rings

EPIRB Mc Murdo E5 Smart Find V1

CCTV (Engine, Aft Deck)

Alarm System Fire Alarm: Kent ecelectronics M8000



## Navigation Equipment

AIS

Auto pilot Furuno ap 3003 gold

Compass magnetic whitestan

Depth sounder Furuno

GPS -Plotter :Furuno navnet 3d

Gyro Compass

Navtex: Furuno nx300

Radar Furuno

Searchlight Sanshin electric hr-1012

VDO

## Communication

Gmdss

Intercom Panasonic Kx- Tea308

Satcom System Japanradio Nqw 267  
(Master Cabin)

Telephone Panasonic Kx-tg1100ji  
VHF

Furuno Hs 2721 3 X Sets (Bridge, Cpt  
Cabin, Master Cabin)



## Galley

Fridge 1 X Mini Frigonautica Fr42rc (Master Cabin)

Cofeemaker Nespresso

Dish Washer Miele G1182 Scv

Fridge / Freezer Miele Full High - 2 Door

Grill Miele H4081 Bm

Fridge

1 X Fridge (Salon) Dur55x206

1 Xmiele 55 Ltrs

1 X Small (Bowarea)

Microwave Miele H4081 Bm

Oven Miele Forra H4900 B

Stove Miele Km5673

Trash Compactor Model 8251 (In Sink)

Ice Maker U-line (Salon)

Washing Machine/Dryer: Miele WT 2670  
2018



## Deck Equipment

Capstans Lofrans Cso 10622

Passarelle Dim- Craft/art.2 4 Geminiplus

Winch Lofrans Project X4

Windlass Bruce

Chains

1 X 120 Mtrs X 12mm

1 X 100 Mtrs X 12mm

## Tenders & Toys

Castoldi Jet tender 14

(4,20mtrs/125hp/7person/Yanmar Diesel  
4JH3-DTE)

1 x Tender Arimar 2.80 mtrs, Mercury 4hp

Jet ski Yamaha model WRVXDeluxe

Toys:1 x Couch Tube





## Refit 2020 – 2022 / Works

Engine QL3 (Full) 2020

Arneson Twin Disc 16 Full overhaul 2020

Full service of zf Gearbox and all anchillaries full overhaul (2020)

New drive transfer joints (2020)

Full winch overhaul (2020)

A/C Condenser overhaul (2020)

New 42" SmartTV in salon 2020

Full new teak deck 2020 ( Flybridge, Stern, Platform)

New Glass panel refitting 2020

Sundeck custo sliding sun tent 2020

New rear semitransparent sunshades including sides 2020

Salon materials including carpet refit 2020

New Service & Engine batteries 2021

New Depth sensor 2022

New Arneson angle indicators 2022

Full passarelle overhaul and rebuild 2022

Rear Capstans overhaul 2022

New Water Separators 2022

All pumps overhauled 2022

Black/Grey/Water/Aircondition/Fire/Sewage plant

New Marantz 3zone Amp 2022

5G Wifi router & 600mbps repeaters

## Description

An exceptional condition Baia 100 built in 2008 continuously upgraded throughout the years. she can accommodate up to 10 guests in 4 spacious cabins out of which two have one bedroom each, all cabins have en-suite facilities. She is the ideal Yacht for high performance funs since she can comfortably cruise at the speed of 30knots cruising and can reach a top speed of up to 35 knots.

The main engines have undergone a QL3 by MTU dealer in 2020 as well as arneson drives by Internautica Greece in 2020

## Disclaimer

The Company offers the details of this vessel in good faith but cannot guarantee or warrant the accuracy of this information nor warrant the condition of the vessel. A buyer should instruct his agents, or his surveyors, to investigate such details as the buyer desires validated. This vessel is offered subject to prior sale, price change, or withdrawal without notice.































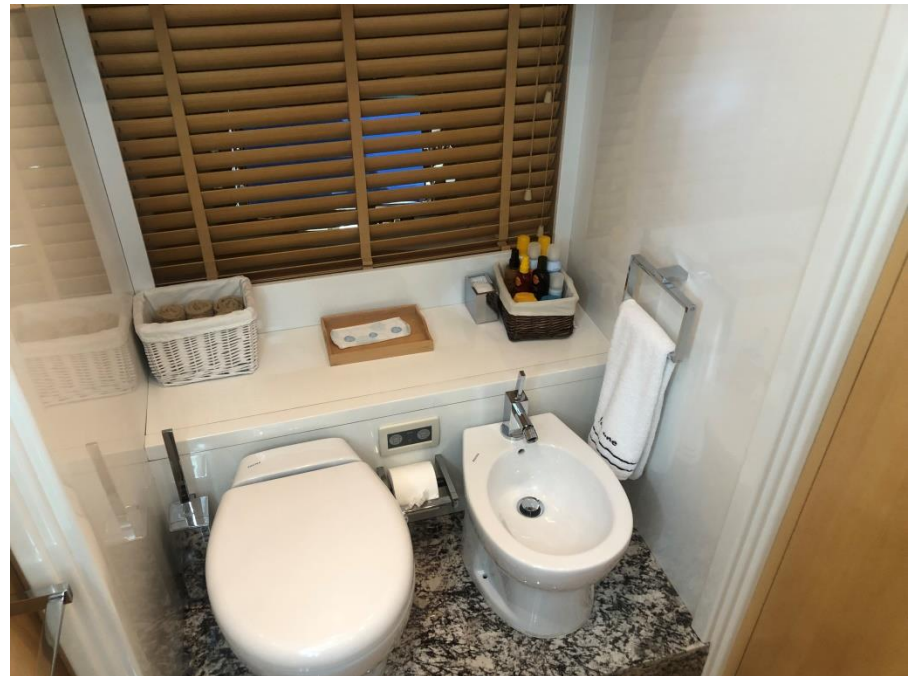
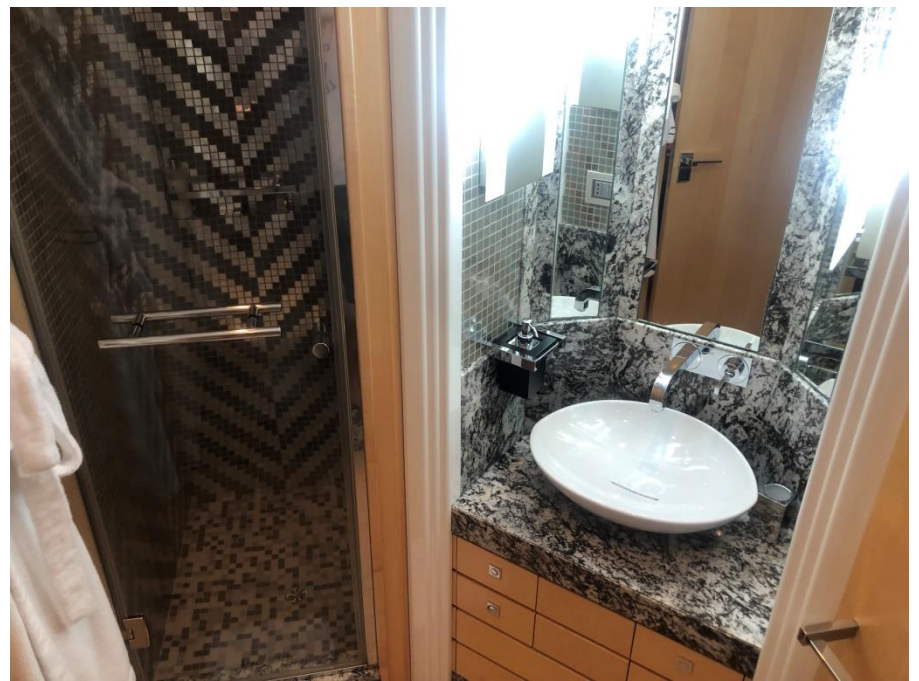




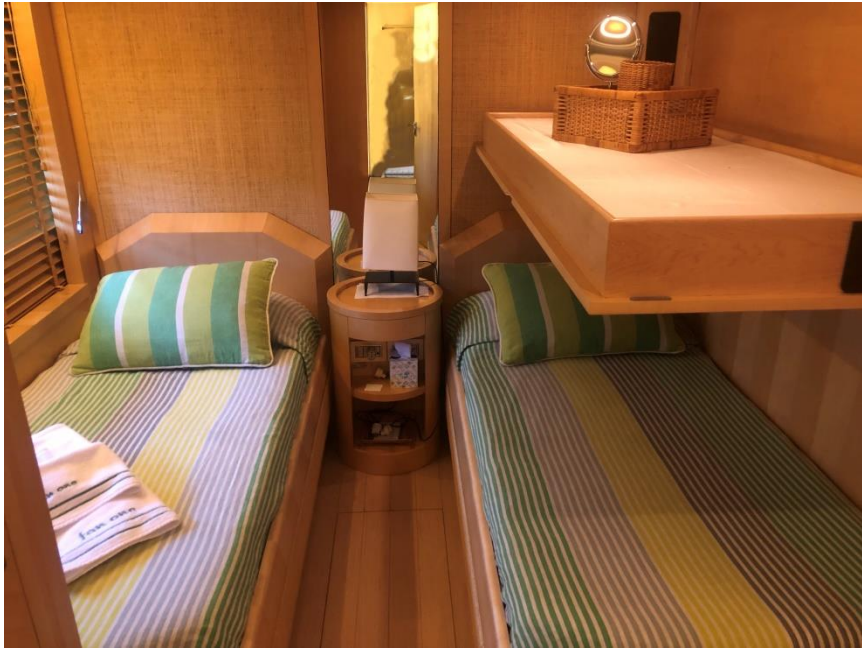




















fan one

fan one



Jan One  
LONDON























