



PARSIFAL
YACHTING

Uniesse 70' Fly - 2006 / 2020

SPECIFICATIONS

GUESTS	CABINS	CREW
9	4	4

CABINS

- 1 Double Master Cabin With Ensuite Facilities
- 1 Double VIP Cabin With Ensuite Facilities
- 1 Guest Cabin With Two Single Beds & Ensuite Facilities
- 2nd Guest Cabin With One Semi-Double Bed & A Pulman Bed With Ensuite Facilities

LENGTH:21.33M(70FT)

BEAM:5.50M(18.1 FT)

DRAFT:1.73M(5.8FT)

BUILT:2006|REFIT2020

BUILDER:UNIESSE

ENGINES:2x1360HPMANV12(2,420 HRS 18/10/21)

GENERATORS:2xONAN (17.5/19 KWA)

CRUISING SPEED:25KN

MAX.SPEED:31KN

KEY FEATURES:

LOTS OF EXTRAS

WARM AND WELCOMING INTERIOR

ACCOMMODATION FOR FOUR CREW

AVON TENDER WITH 40HP 4 STROKE

LARGE FLY BRIDGE WITH FULL BIMINI

LARGE AFT DECK AREA

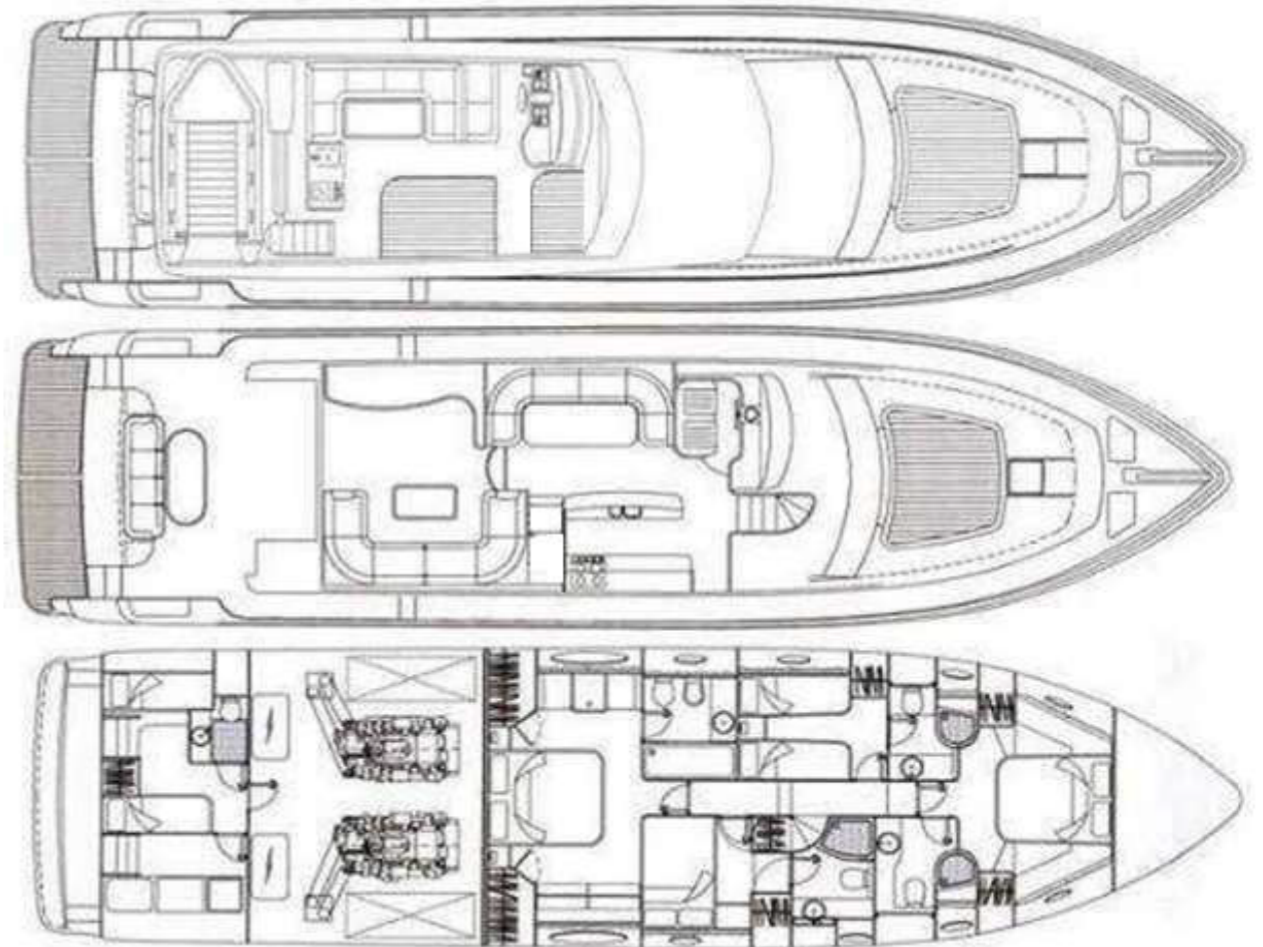
PLENTY OF INTERIOR & EXTERIOR VOLUMES THROUGHOUT

BOW & STERN THRUSTER

TWO GENERATORS

WATERMAKER

Asking Price: €890. 000





Side View



Sunny mornings



Aerial view



Aft deck



Details onboard



Sundeck area



Relaxing moments



Bow view



Unique culinary experience



Saloon area



Dining



Galley view



Master cabin



Master other view



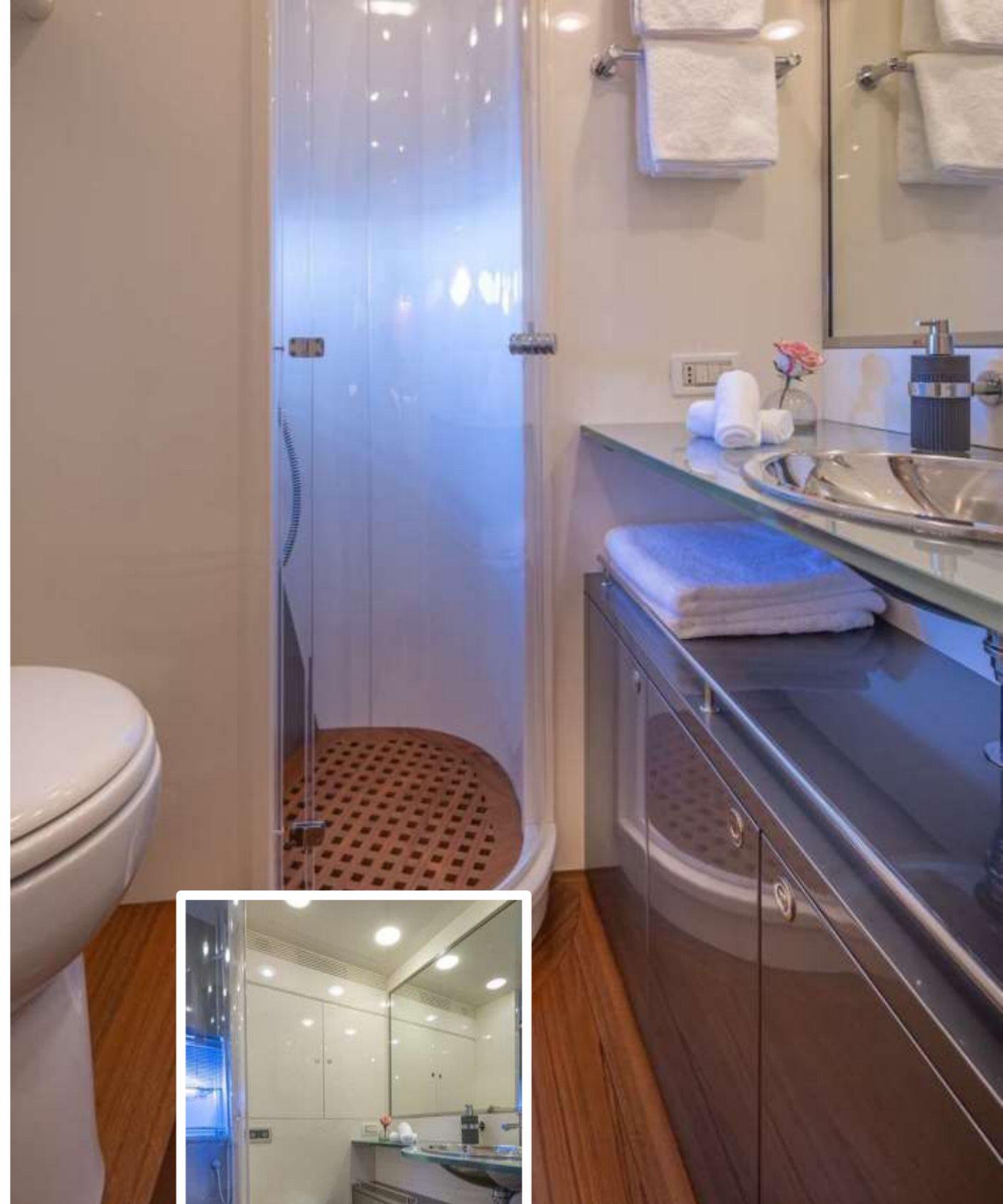
VIP cabin



Double cabin



Twin cabin



Ensuites