

PARSIFAL
YACHTING



Zaliv III

Mondomarine Semi Displacement 50m

Specifications ■

Builder: MondoMarine Shipyard

Type: Mondomarine Semidisplacement 50m

L.O.A: 49.20m / 164'

L.W.L: 42.35m

Beam: 9.10m / 29.9'

Draft: 2.3m / 7.5'

Draft (full load): 4.40m

Draft (half load): 3.30m

Hull: Aluminium

Year : 2011

Refit: 2019

Classification: ABS classification A1 Commercial Yachting Service AMS,
MCA compliant

Designer: Concept design and exterior styling Giorgio Vafiadis & Associates –
Interior design Luca Dini design

Engines: 2 x 3.770 hp MTU 16V4000M90

Cruising Range: 2.500 miles at 14 knots or 3.500 miles at 12 knots

Cruising Speed: 14 knots

Max Speed: 20 knots

Water Capacity: 11.000Lt

Fuel Capacity: 80.000Lt

Gross Tonnage: 499 GRT

Grey Water: about 2.000Lt

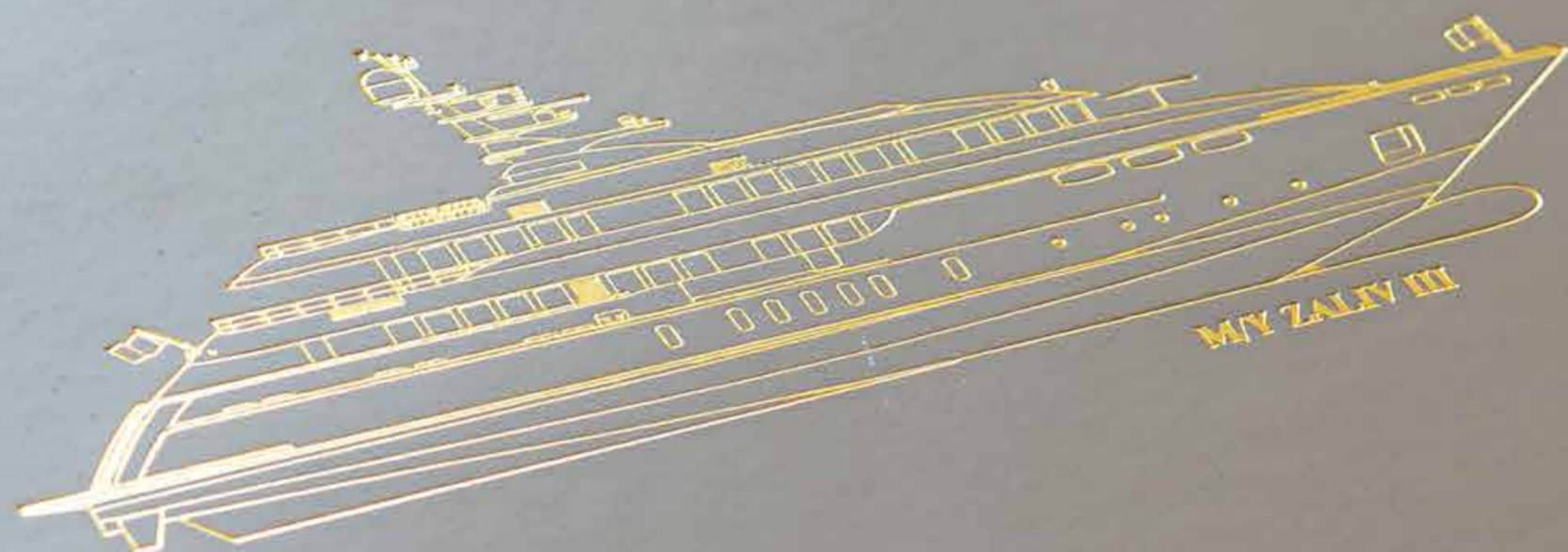
Consumption: 450Lt at 14 knots, 1400Lt at 20knots / 280Lt per day with
one generator

Accommodation: 12 guests in 6 cabins

Flag: Malta

Location: Athens, Greece

Asking Price: 18.750.000€ VAT Paid





Machinery ■

Air Conditioning: Designed for tropic conditions 120.000 BTU Frigit

Batteries: Totally 2200 Ah. All of them gel type "Mastervolt "
with their battery chargers

Boiler: x 200 lts electr. " GIANESCHI"

Bow Thruster: 100kw

Desalinator: 2 units 1x10000 lts/day + 1x5000lts/day

Electricity: 380v-220v-24v

Engines: 2 x 3.770hp MTU 16V4000M90

Engine Hours: 6500 hrs (Dec 2023)

Gear Box: ZF

Generators: 2 x 105 kw each northern light + night generator

Gen.Hours: 21.000 hrs (Dec 2023)

Inverter

Propellers: 2 fixed pitch propellers

Propulsion: Shaft

Reduction gear: ZF

Sewage System: Biological Sewage Treatment

Shafts: 2

Shore Power: 80kwa

Stabilizers: Vosper-Naiad-Zero speed

Steering System: Hydarulic

Toilet System: Vacuum "Jets" system

Trim Tabs

Watermaker: Vacuum "Jets" system



Accommodation ■

Master cabin: Upper deck: 1 master cabin with a king size bed, his & hers bathroom, jacuzzi, walk in closet, private lounge area with office and private deck area

Vip cabin: Main deck forward: 1 full beam VIP cabin with a king size bed & two pullman berths, his & hers bathroom, jacuzzi, walk in closet, office area

Guest's cabin: Lower deck: 2 double cabins with a queen size bed & ensuite facilities.

2 twin cabins with a pullman berth & ensuite facilities

Captain's cabin: 1 single (in the wheelhouse area)

Crew cabin: 4 doubles + 1 single

Laundry Equipment ■

Dryer

Iron

Washing machine



Galley Equipment ■

Coffee maker
Cooker
Deep Freezer
Dishwasher (3pc)
Fan extractor
Fridge
Fridge/Freezer
Grill
Microwave (2pc)
Mini bar (4pc)
Oven
Refrigerator
Sink
Stove
Trash compactor
Wine cooler
Ice maker

Construction ■

Decks: Aluminium Alloy
Hull: Aluminium
Superstructure: Aluminium



Deck Equipment ■

BBQ

Bimini top

Capstans

Davits/Cranes: 2 one in bow for emergency craft and one in main garage for main tender

Passarelle: Mor Saverio

Stern platform

Trim tabs

Winch

Windlasses (2)

Flybridge with exceptional Jacuzzi, bar, bbq, dining area

Main deck: Teak

Sun deck: Teak

Upper deck: Teak

Communication Equipment ■

Fax

GMDSS: VHF Sailor RT 5022

Intercom

LOG

Satcom System: Globe Wireless I-250&Iridium IG-251

Telephone: Satellite & GMS



Navigation Equipment ■

Autopilot: Sperry Marine NAV/PILOT 4000
Compass: Northrop Grumman
Depthfinder: B&G H 3000
Depthmeter: B&G H 3000
Depthsounder: B&G H 3000
Echosounder: Furuno FE-7000
Fishfinder: Furuno FE-7000
GPS: (2) Furuno GP-100
GPS-Plotter
Geonav: Navisailor 4000 ECS
Gyrocompass: Sperry Marine Navigat x MK 2
Navtex: Furuno NX-700
Plotter: (2) Furuno
Radar: (2) Furuno FAR-2117&2137 S
Searchlight: (3)ITT Jabsco & Carlisle&Finch Co.
Speedlog: Furuno DS 100
Speedmeter

Safety Equipment ■

Alarm system
Fire Fighting: Autoprime
Fire extinguishers: 32 pcs
Life jackets: 42 pcs
Life raft: 4 (2 For 12 persons & 2 For 16 persons)
Life rings: 4
Safes: 8
Security system



Tenders & Water Toys ■

Jet Ski Types:

One PC Yamaha 110 HP

One PC Yamaha 245 HP

One Super Jet (Standing Type) Yamaha

Tender Types:

One "Novurania" 5.40m with 200 Diesel Driven Volvo Penta 200HP

One "Lomac" 4.3m with outboard Yamaha 4 stroke

Water-ski

Windsurfing

Entertainment Equipment ■

CD: 15

DVD: 15 + Lutron

Stereo System: Bose

TV: 16

Comments ■

One of the few available 50 metres semi displacement aluminium yachts in the market with variable speed from 12 knots up to 20 knots.

The choice of a contemporary, almost minimalist design contrasting with exquisitely tasteful furniture makes ZALIV III unique and original.

Materials and colours of the interiors enhance the sense of space.

The top deck is fitted with a large Jacuzzi along with TV on fly.

She has been built with the most modern equipment (zero speed stabilizers, 3 large generators, special entertainment system and electrical curtains adjusted with the MAIN LUTRON MONITORING SYSTEM, special lighting design, special and extra insulating level, blue hull and many other features.





Superyacht ZALIV III has been nominated among the finalists within the prestigious 2012 World Super Yacht Awards & 2012 Show Boats Design Awards ■

Zaliv III is one of the few available 50m semi displacement aluminum yachts in the market, with variable cruising speed from 12 knots to 20 knots, built with the most modern equipment to deliver the ultimate cruising experience ■

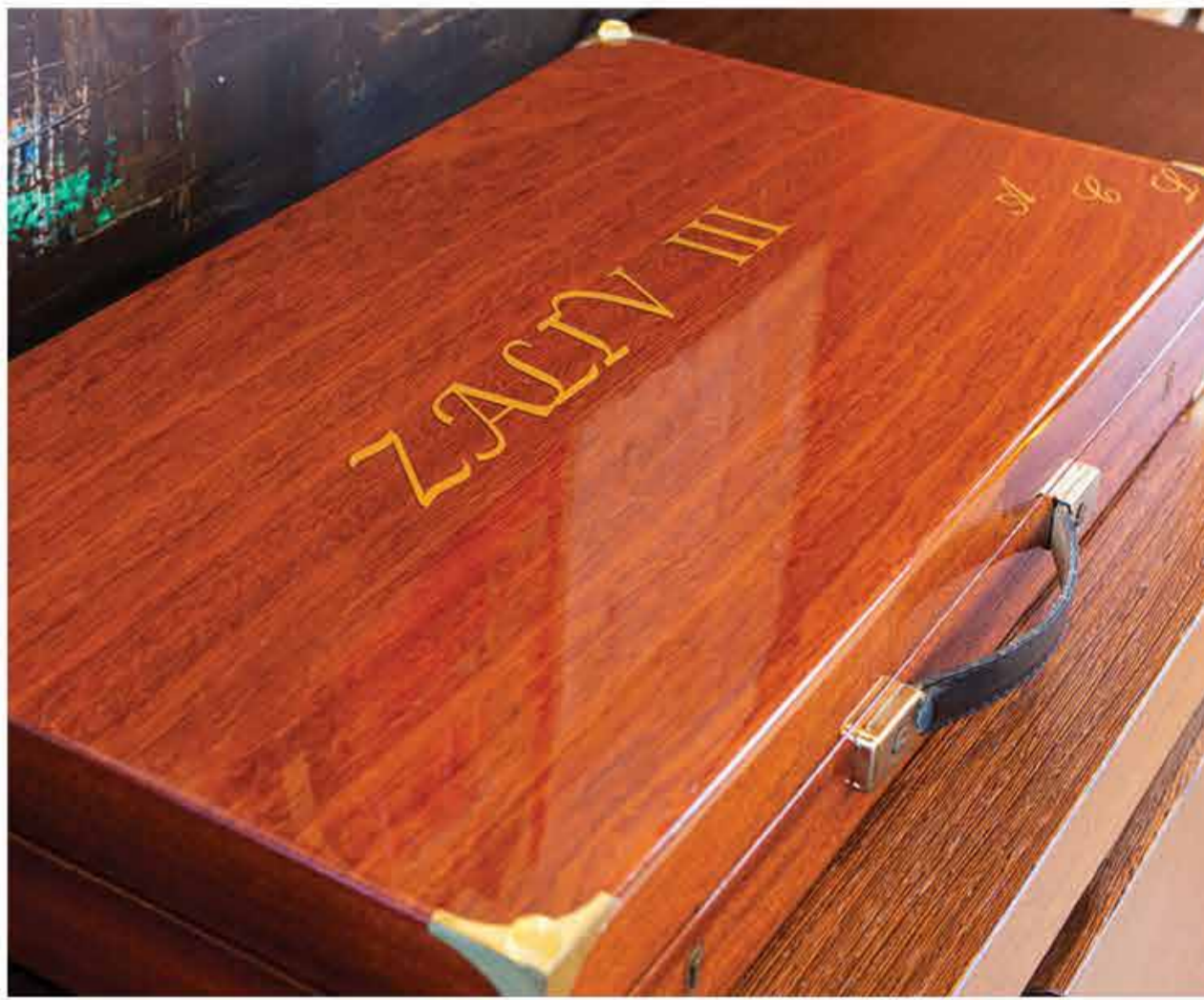






The choice of a contemporary, almost minimalist design contrasting with exquisitely tasteful furniture makes ZALIV III unique and original





Fine woods incorporating with luxury materials and aesthetic lighting elements are giving ZALIV III a fabulous sense of space



dining area





The dining table at the main deck can be converted into a backgammon table ■





The sophisticated full beam Master Cabin is located on the upper deck offering unparalleled views & privacy ■



The Master Cabin features a king size bed, walk in closet and ensuite facilities

his & hers bathroom





His and Hers en suite facilities, jacuzzi, shower & steam bath

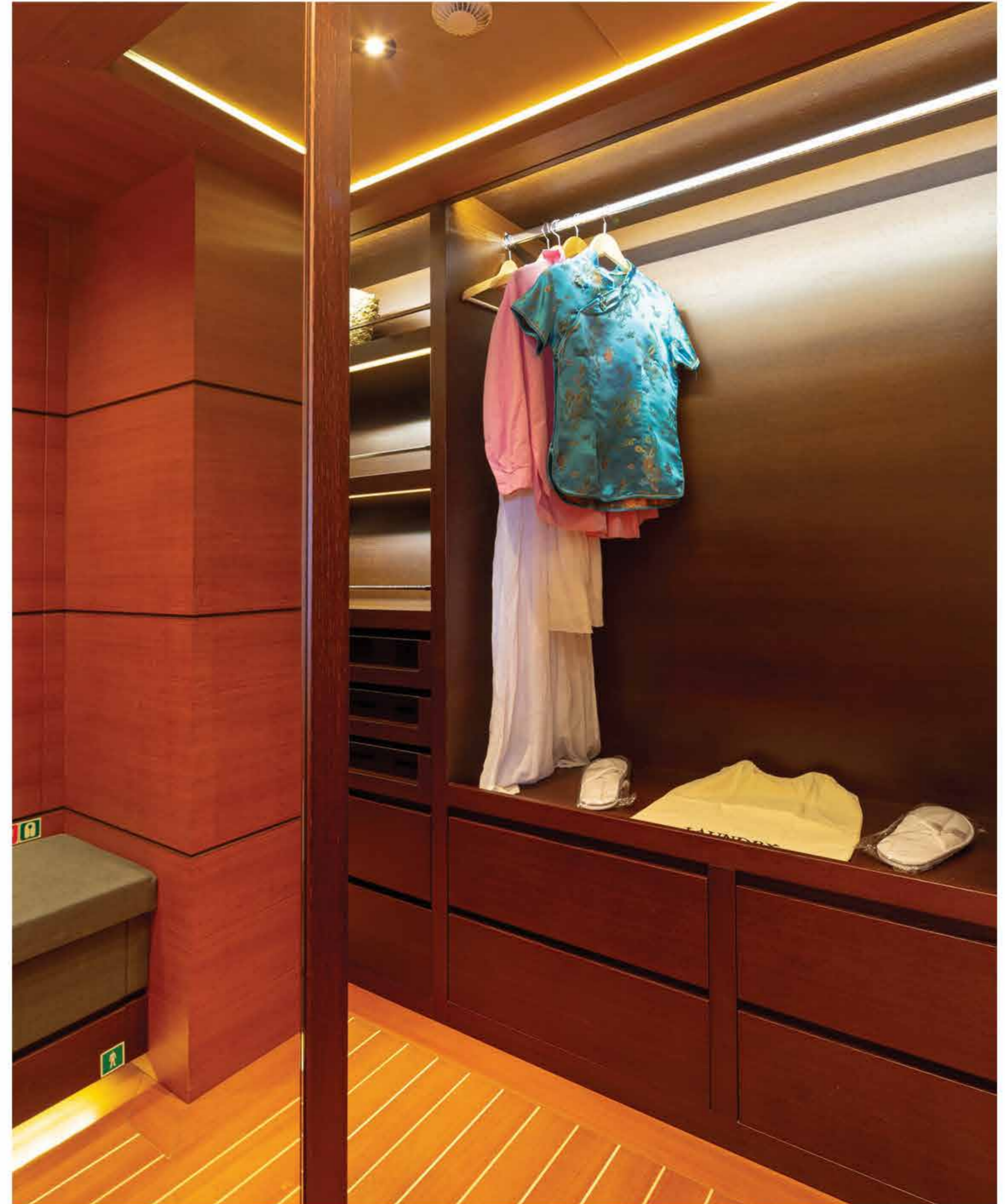






The beautiful full beam VIP cabin, with a king size bed, is located on the main deck and is like a second Master





VIP Cabin walk in closet and office area

■ VIP bathroom



VIP his & hers bathroom, jacuzzi, shower & steam bath ■

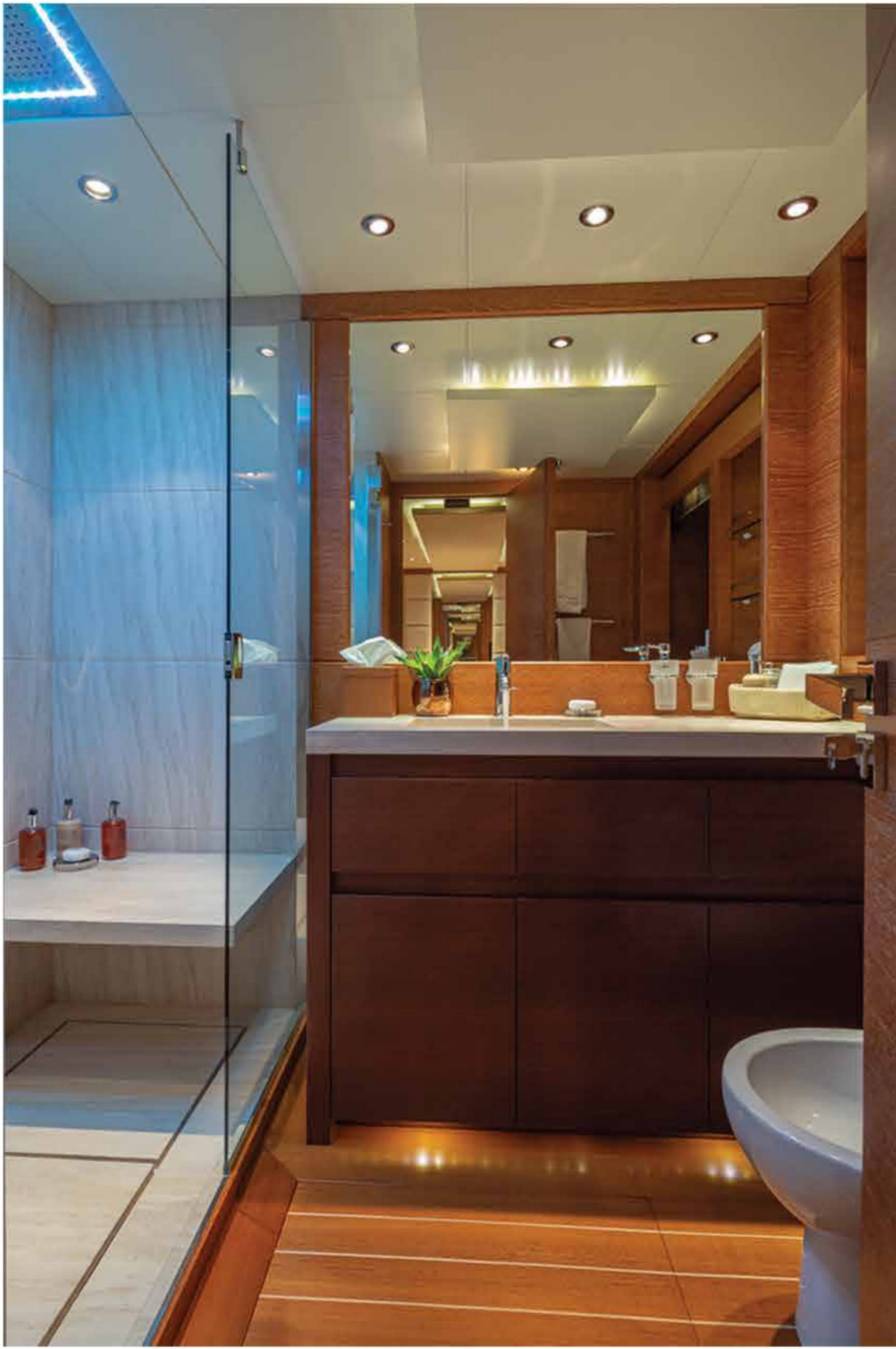




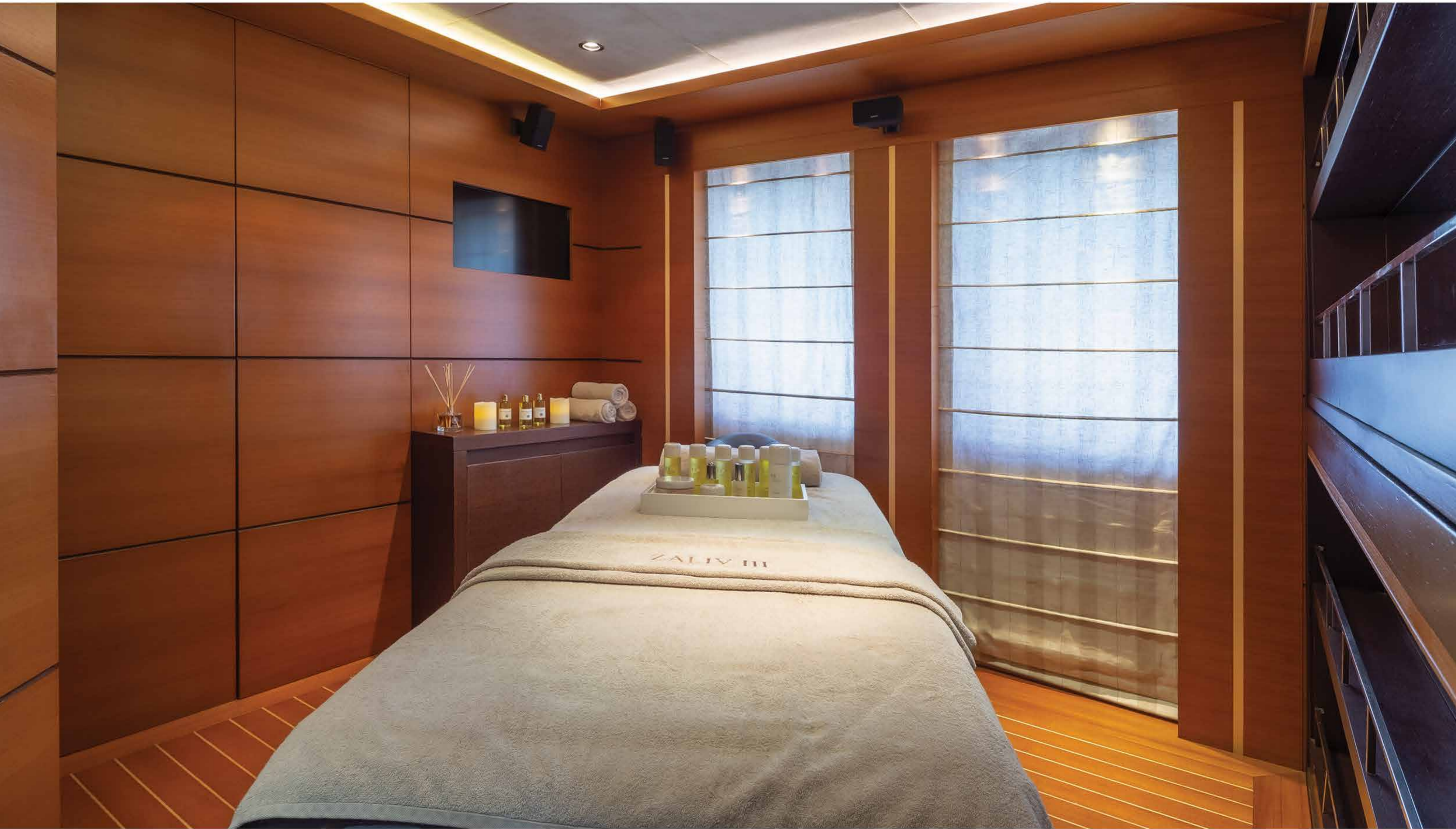
Two elegant double cabins are located on the lower deck, with a queen size bed and ensuite facilities with shower & steam bath

■ twin cabin



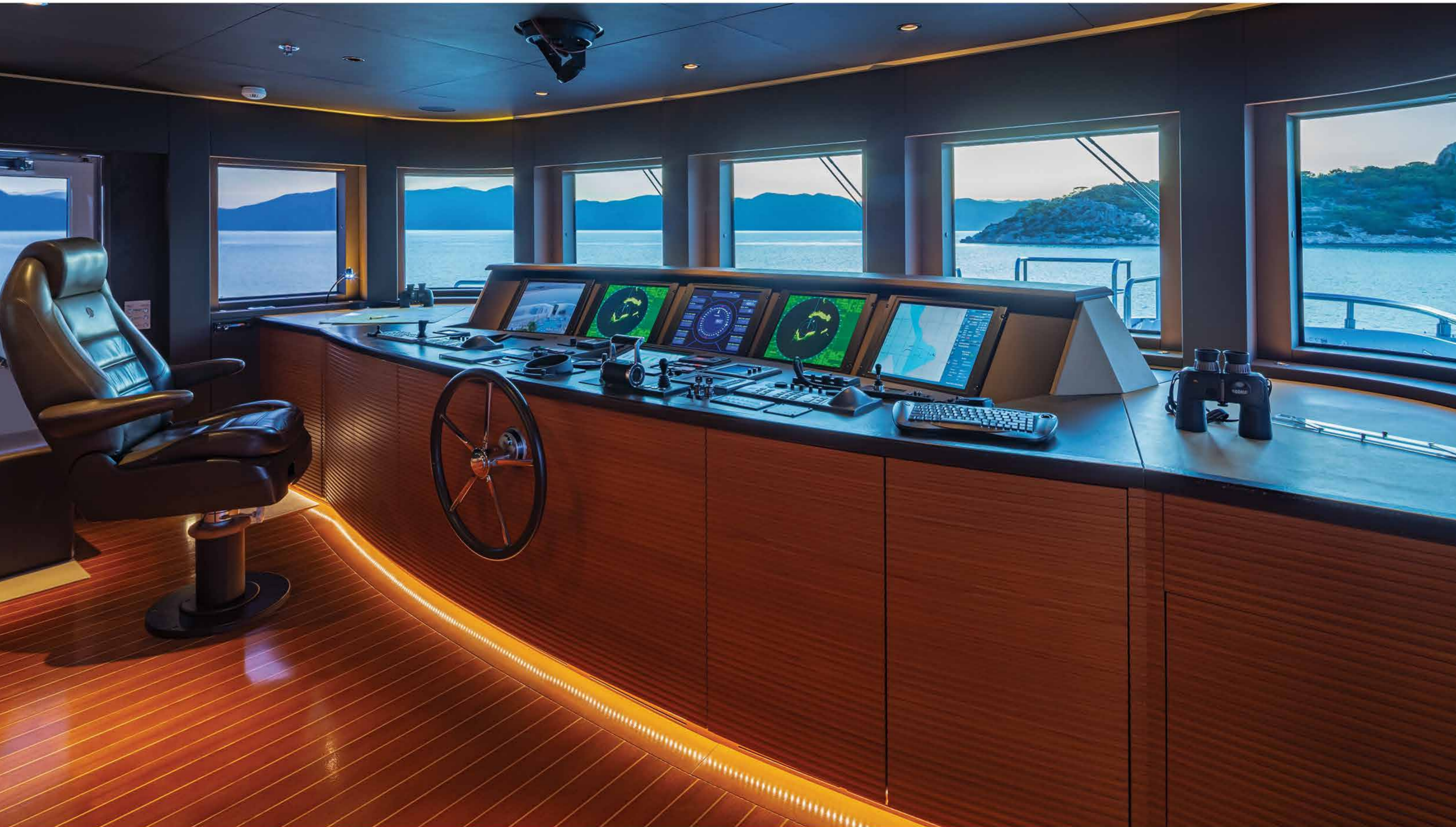


The two spacious twin cabins located on the lower deck offer a pullman berth each and ensuite facilities













ZALIV III



Zaliv III's three exterior decks are perfect for relaxing and entertaining, offering a vast variety of living spaces to enjoy the Mediterranean sun ■



ZALIV III
VALLETTA











■ upper deck







The magnificent and expansive sundeck hosts a large Jacuzzi, sunbathing area , beautiful lounge area , bar and al fresco dining able to accommodate up to 24 guests ■



The large jacuzzi is the ultimate place for relaxation providing spectacular views











■ swimming platform



Zaliv III offers a huge selection of water toys for everyone to enjoy ■



