

PARSIFAL
YACHTING



Tamarita
Perini Navi 46.50m





















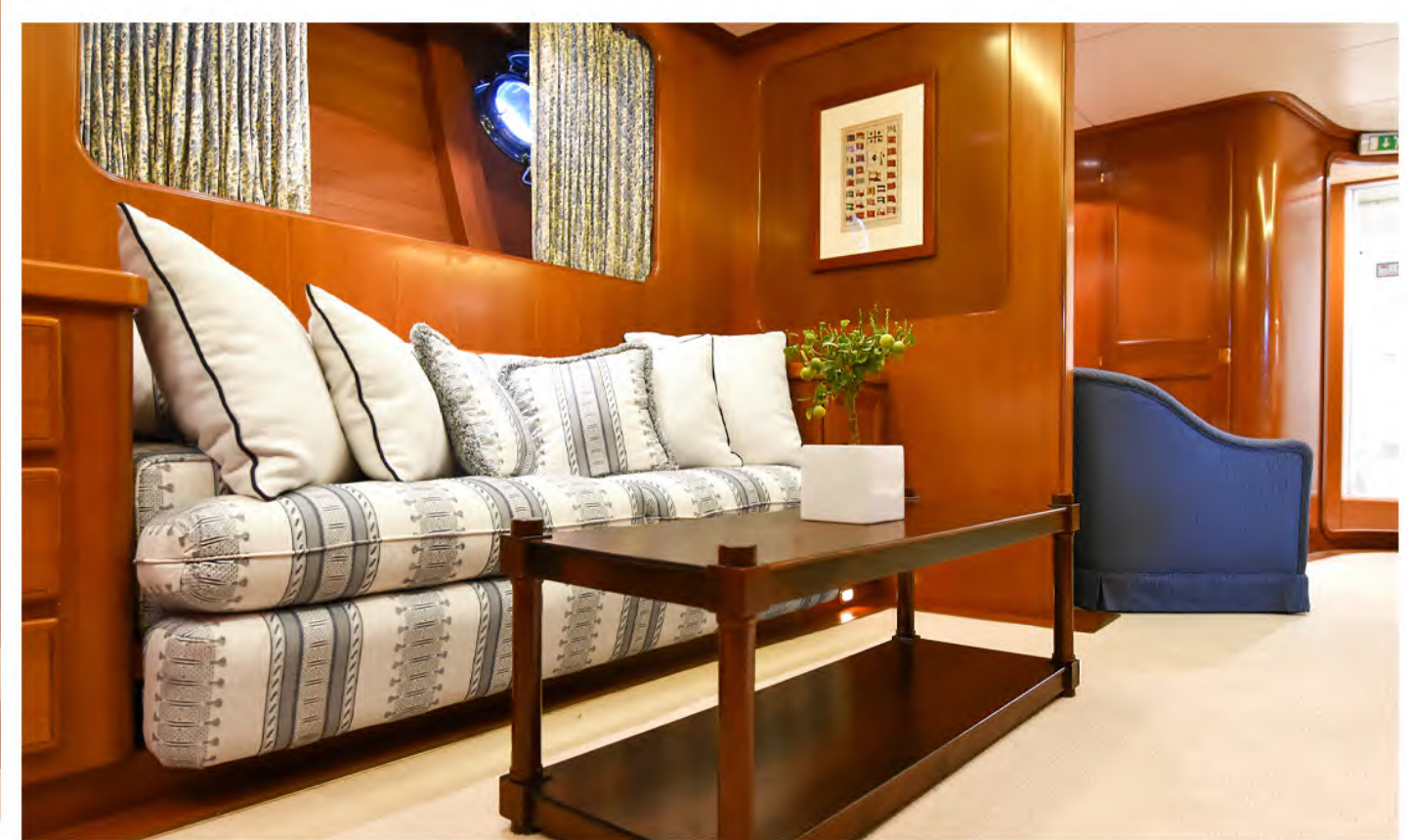












master cabin ensuite









■ VIP cabin ensuite







■ twin cabin ensuite



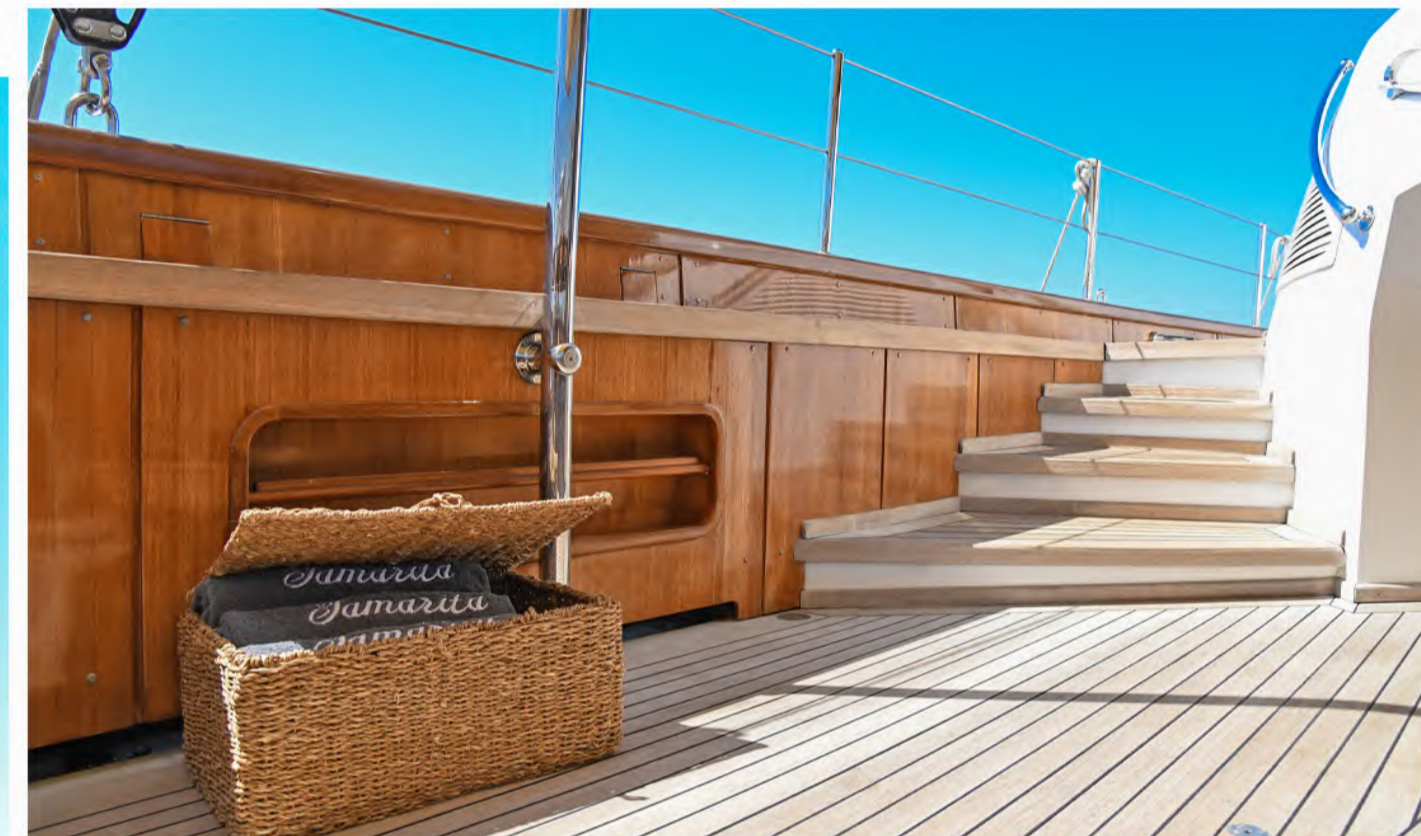














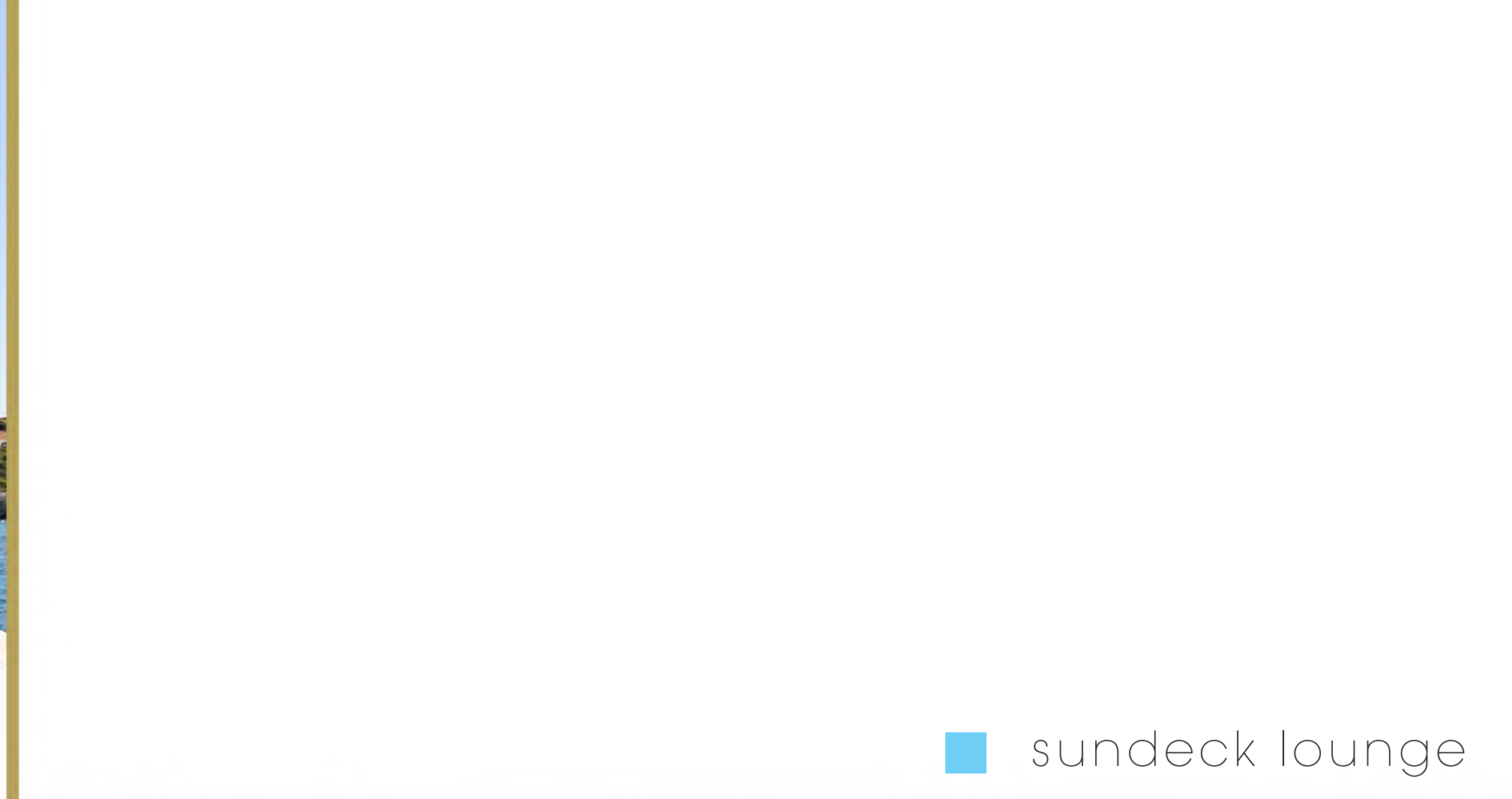








■ sunbathing area



■ sundeck lounge











Specifications ■

Length: 46.50m (152' 7")

Beam: 9.20 m (30' 2")

Draft: 3.40m (11')

Year Built: 1992

Refit: 2022

Builder: Perini Navi

Number of Cabins: 4

Total Guests: 10

Total Crew: 8

Based in Greece

Engines: 2 x MTU 12V183TE91 – 640HP 447.6 KW EACH

Cruising Speed: 12 knots

Max Speed: 14 knots

Fuel Consumption at cruising speed: 190 Litres/Hr

Generators

2 DIESEL AUX. ENGINES NORTHERN LIGHTS 80KW

1 NORTHERN LIGHTS 50KW

Generators consumption 400ltrs/day

Air conditioning, WiFi connection on board





Accommodation ■

S/Y Tamarita accommodates up to 10 guests in four luxurious cabins

One full beam Master Cabin with his & hers bathrooms with shower and jacuzzi tub and an office with lounge area

One VIP Cabin and two Twin Cabins with a pullman berth in each

All with ensuite facilities



Entertainment ■ & Communication

Audio Visual Equipment and Deck Facilities:
Latest equipment of 5G WI-FI with outdoor and
indoor access points

Sonos amplifiers for music on board through mobile application,
compatible with air play and other devices.

55" TV in Main Salon

43" TV in Master Cabin and a 43" TV in Master Office

32"TV in VIP Cabin

43" TV in Twin Cabins

Communications:

C-Plath

C Plath Navigat II DHI-04 G

C Plath 2119MC

2 X Furuno GP37

Furuno RCU 014 / Furuno SR15 100A

Furuno NX700

AIS Furuno FA 150



2022 Refit Details Interior ■

Salon:

Total renovation of the living room, new sofas and armchairs, new custom made tables, new curtains, new custom made lamps with nautical designs, polishing of all wooden areas.

Dining:

New sofa and cushions with Ralph Lauren Fabric, new dining chairs with white leatherette, New curtains, New custom made lamps with nautical design, polishing of all wooden areas

Cabins:

New linen in all cabins (Pillows, Bedsheets, bed covers, towels of high quality fabrics (Guy Laroche).

New LED tape and led bulbs in all cabins.

New amenities and accessories in all bathrooms

Galley and service:

New Kitchen equipment, service equipment and tableware accessories.

New glassware, formal & casual dinnerware, new Bausher formal plates. New cutlery sets.



2022 Refit Details ■

Exterior:

New pillow and fabrics for all outside areas

New water toys (Sea bob, sofa, banana, towables for two persons, SUP, Kayak, Ski)

New sun tents on all exterior areas

New LED lighting all around the perimeter of the deck area

Sail winches overhauled

Update of bridge systems and equipment

Bow thruster DD inspection/service

Tail shaft inspection and service at DD

Fresh water tanks cleaned and painted

Wi-Fi network and S.O.N.O.S. sound systems (speakers and applications that control Netflix, Spotify e.t.c. in all areas, with the option of being separate from each other).

New Smart TVs throughout the yacht



Tenders & Water Toys ■

1 x 5m II Rib BWA 18 GT Sport 2016 F115 ELPT Mercury

1 x 3,60m HIGHFIELD SP 2023 40HP Honda

1 x Seabob F5

2 x SUP

1 x Kayak 1 person

1 x Inflatable platform

1 x Jobe towable Tube (2 persons)

1 x Jobe towable Sofa (4 persons)

1 x Jobe Banana (4 persons)

1 x pair adult skis

Snorkeling equipment







